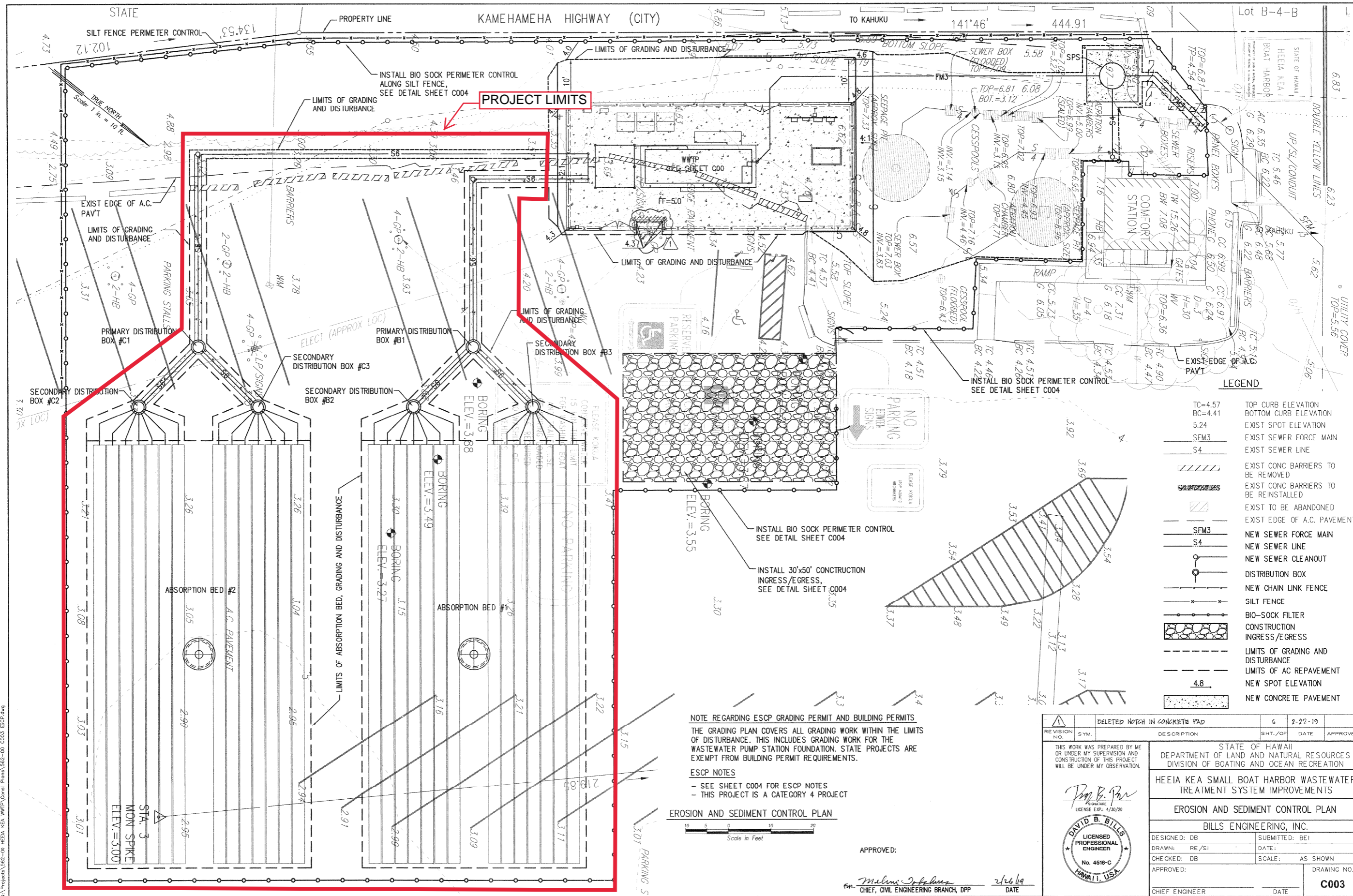
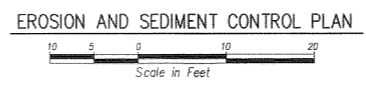


REVISED PER ADDENDUM NO. 5  
ISSUED 6/2/20



NOTE REGARDING ESCP GRADING PERMIT AND BUILDING PERMITS  
THE GRADING PLAN COVERS ALL GRADING WORK WITHIN THE LIMITS OF DISTURBANCE. THIS INCLUDES GRADING WORK FOR THE WASTEWATER PUMP STATION FOUNDATION. STATE PROJECTS ARE EXEMPT FROM BUILDING PERMIT REQUIREMENTS.

ESCP NOTES  
- SEE SHEET C004 FOR ESCP NOTES  
- THIS PROJECT IS A CATEGORY 4 PROJECT



APPROVED:  
*Melvin Johnson*  
DATE: 2/22/19  
CHIEF, CIVIL ENGINEERING BRANCH, DPP

LEGEND

TC=4.57	TOP CURB ELEVATION
BC=4.41	BOTTOM CURB ELEVATION
5.24	EXIST SPOT ELEVATION
SFM3	EXIST SEWER FORCE MAIN
S4	EXIST SEWER LINE
[Symbol]	EXIST CONC BARRIERS TO BE REMOVED
[Symbol]	EXIST CONC BARRIERS TO BE REINSTALLED
[Symbol]	EXIST TO BE ABANDONED
[Symbol]	EXIST EDGE OF A.C. PAVEMENT
SFM3	NEW SEWER FORCE MAIN
S4	NEW SEWER LINE
[Symbol]	NEW SEWER CLEANOUT
[Symbol]	DISTRIBUTION BOX
[Symbol]	NEW CHAIN LINK FENCE
[Symbol]	SILT FENCE
[Symbol]	BIO-SOCK FILTER
[Symbol]	CONSTRUCTION INGRESS/EGRESS
[Symbol]	LIMITS OF GRADING AND DISTURBANCE
[Symbol]	LIMITS OF AC REPAVEMENT
4.8	NEW SPOT ELEVATION
[Symbol]	NEW CONCRETE PAVEMENT

REVISION	SYMBOL	DESCRIPTION	SHT./OF	DATE	APPROVED
		DELETED NOTCH IN CONCRETE PAD	6	2-22-19	
THIS WORK WAS PREPARED BY ME OR UNDER MY SUPERVISION AND CONSTRUCTION OF THIS PROJECT WILL BE UNDER MY OBSERVATION.					
STATE OF HAWAII DEPARTMENT OF LAND AND NATURAL RESOURCES DIVISION OF BOATING AND OCEAN RECREATION					
HEEIA KEA SMALL BOAT HARBOR WASTEWATER TREATMENT SYSTEM IMPROVEMENTS					
EROSION AND SEDIMENT CONTROL PLAN					
BILLS ENGINEERING, INC.					
DESIGNED: DB	SUBMITTED: BE1		DATE:		
DRAWN: RE/JSI	CHECKED: DB		SCALE: AS SHOWN		
APPROVED:	DATE:		DRAWING NO. C003		
CHIEF ENGINEER	DATE:				

M:\Projects\192-06-HEEIA KEA WWTP\Conrad Plans\192-06-C003 ESCP.dwg  
 Date: 02 Feb 2019 8:08am  
 User: jay